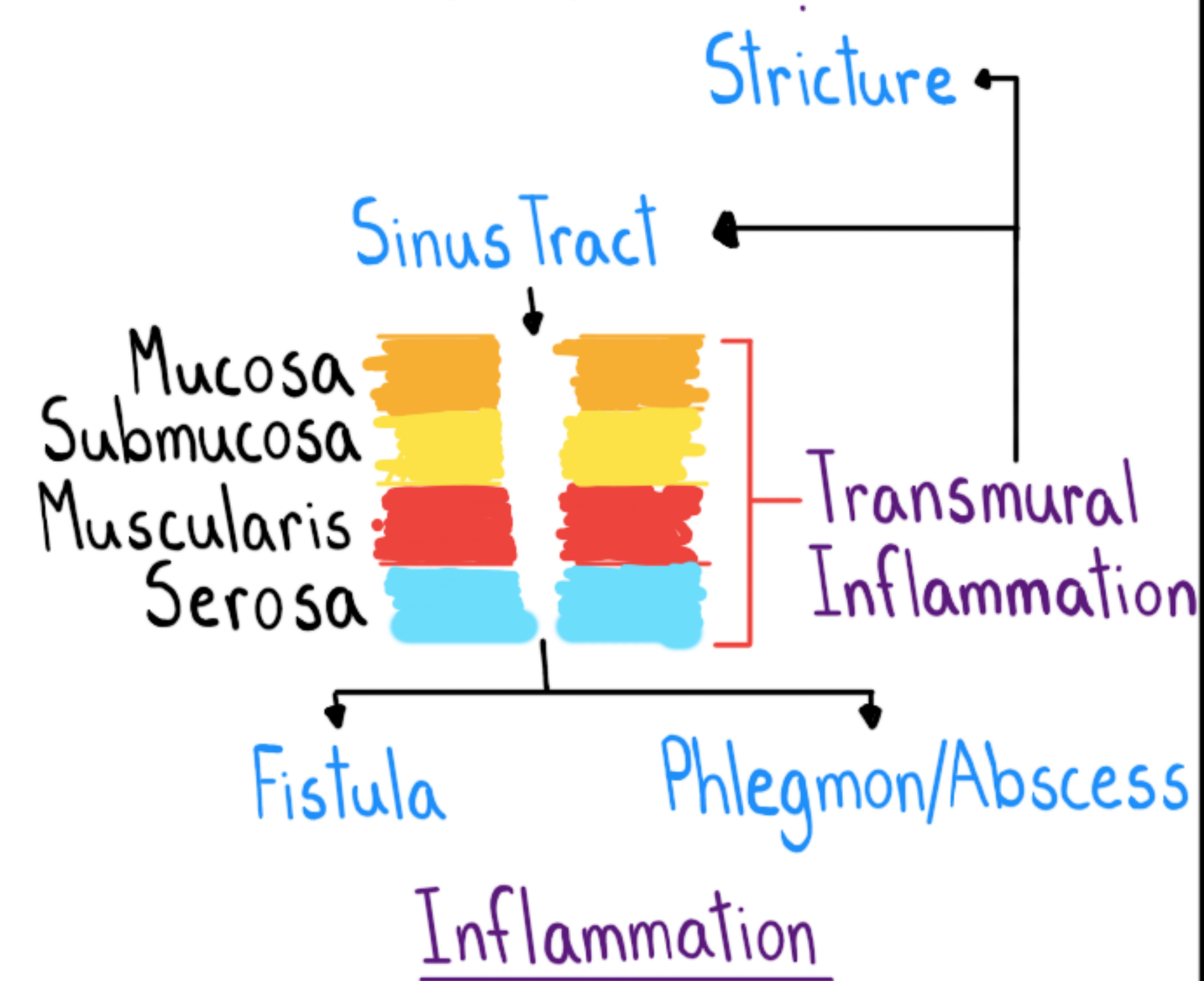


# Crohn Disease

## How?

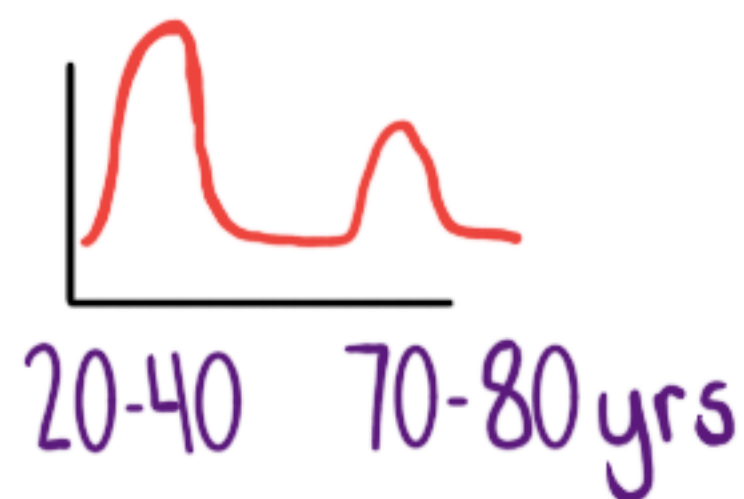
Immune Dysregulation



- Ileitis Limited: 30%
- Colon Limited: 20%
- Ileocolitis: 50%
- Upper GI: ~10%
- Perianal Disease: 30%

## Who?

- 1° FMHx (10%)
- Cigarette Bad Crohn (CBC)



## What?

### Tempo

Acute or Chronic

### Main Symptoms

Abd Pain, Diarrhea, Fatigue, Wt Loss

### Gastrointestinal

- Intestinal Strictures, Abscess, Fistulas
- Perianal Fissures, Ulcers, Stenosis
- Other: Aphthous Ulcers
- Post Prandial Pain,
- Malabsorption (B12, Ca<sup>++</sup>)
- Dysphagia/Odynophagia

### Extraintestinal (30%)

- Joint (Most Common)
- Eyes (Episcleritis, Uveitis)
- Skin (E. Nodosum, P. Gangrenosum)
- PSC, AA amyloid, Lung
- Nephrolithiasis, Bone Disease

## Exam?

- Perianal Skin Tags
- Sinus Tract
- Abd Tenderness, Mass (RLQ)

## Labs?

- ↓Hbg, ↑WBC, ↑CRP
- ↓Fe, ↓Ca<sup>++</sup>, ↓D

## Dx

- Assess For Infection
- Stool (+) Calprotectin/Lactoferrin (↑↑NPV)
- Imaging, Endoscopy, Path

## Rx

