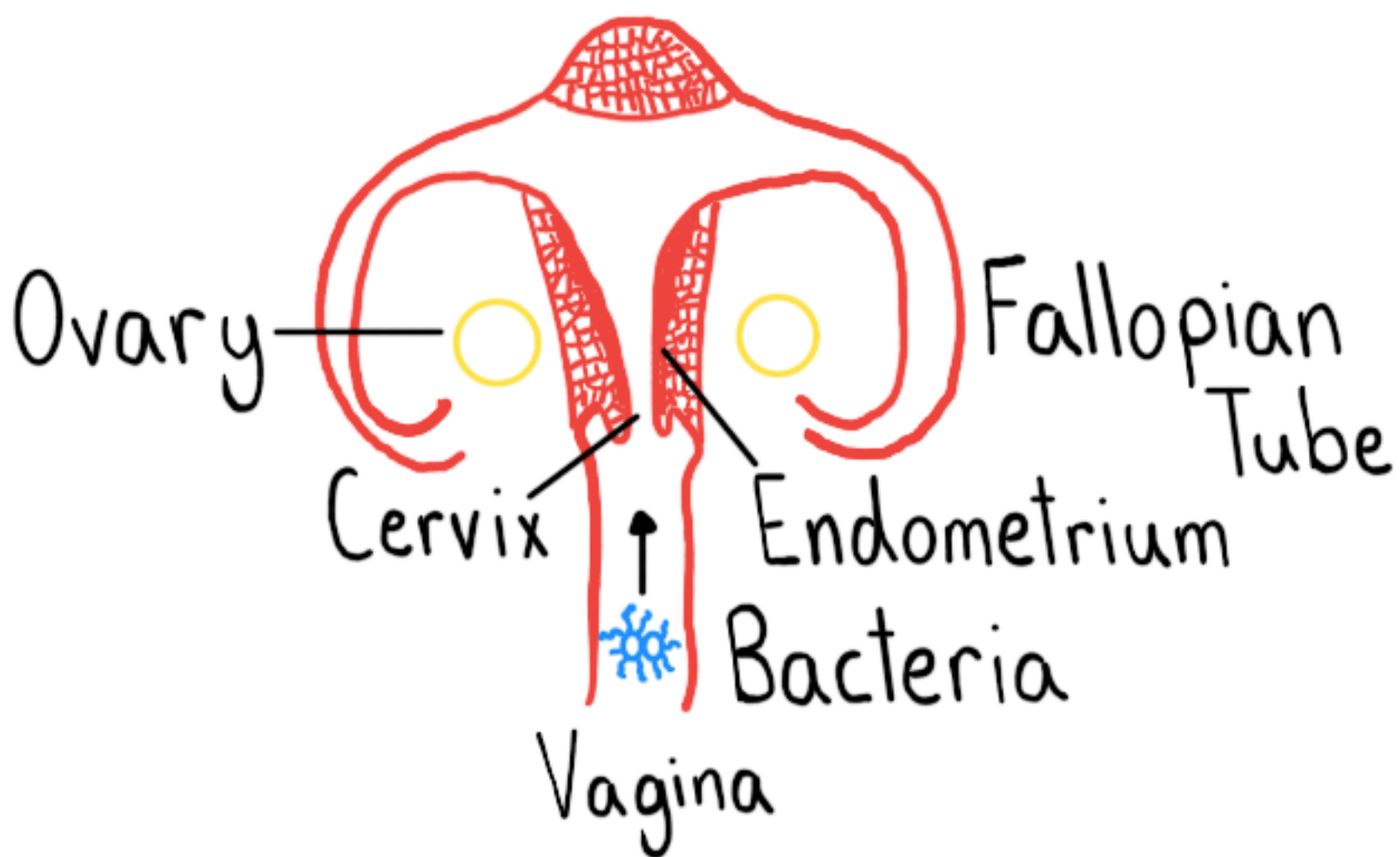


How?

Pelvic Peritoneum



Micro?

- Separate Schema

Who?

- Sexually Active
- Menstruation

DDx:

- Appendicitis
- Tuboovarian Abscess/Cyst
- Pyelonephritis
- Ectopic Pregnancy
- Endometriosis

Acute PID

What?

- Lower Abdominal/Pelvic Pain (Severity & Onset Variable)
- Abnormal Vaginal Discharge
- Intermenstrual/Post-Coital Bleed
- Dyspareunia, Dysuria
- Fever (Not Prominent Feature)

What Else?

- RUQ Pain: Fitz-Hugh-Curtis
- Infertility
- Ectopic Pregnancy
- Chronic Pelvic Pain

Edu:

- Subclinical > Acute PID by 2X
Complication → Dx
- Menses → ↓ Cervical Plug → ~~⚡~~ Ascend
- Pyelo of Gyn Tract • ↓ Dx Threshold

Dx:

↑Dx Criteria > ↓Sens, ↑Spec

- Pelvic Tenderness (↑Sens, ↓Spec)
 - Cervical Motion Tenderness
 - Adnexal Tenderness
 - Uterine Compression Tenderness
- Lower Genital Inflammation
 - Cervical Mucopus
 - ↑WBC (Wet Mount)
- Micro Data: N. gon, C. trach

Other

- Transvaginal US (↓Sens, ↑Spec)
- CT (DDx)

Rx:

- Abx: N. gon/C. Trach + Anaerobes
- Most Outpatient
- Treat Partner
- Leave IUD Alone