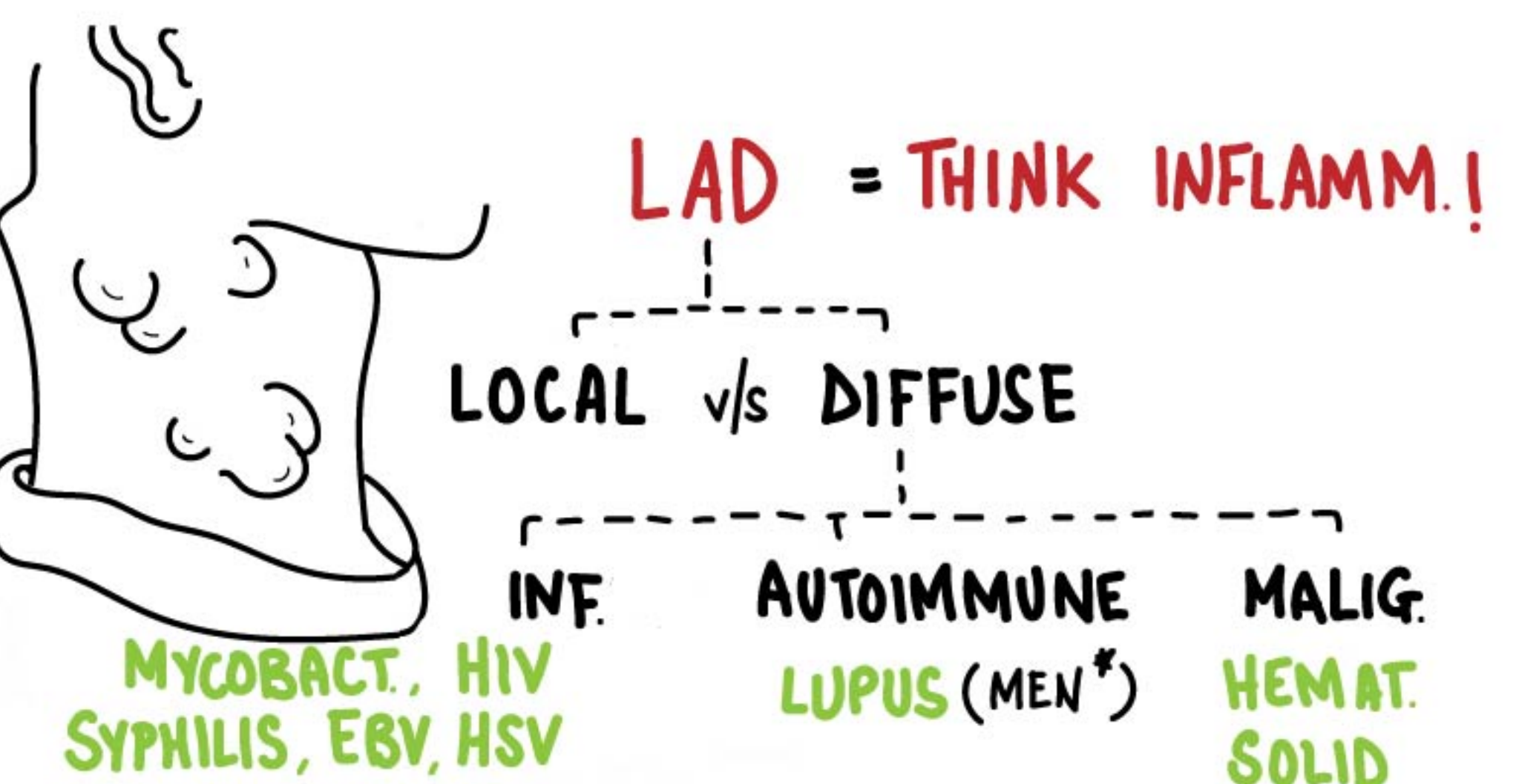
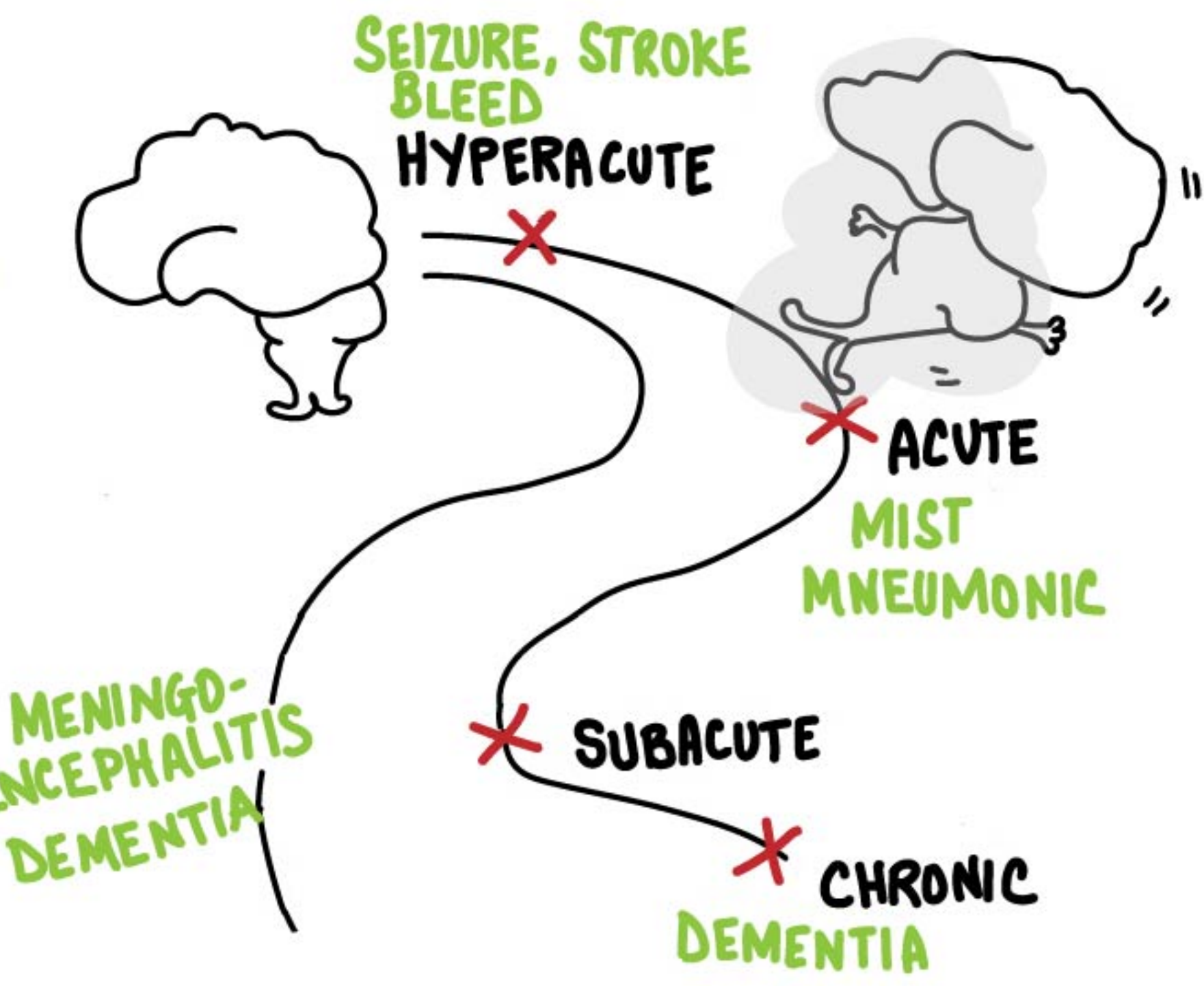




CLINICAL REASONING PEARL: OPERATING Dx
 WHEN IN DOUBT USE AN OPERATING Dx [Ex HERE: ADRENAL INSUFFICIENCY] TO PROVIDE A FRAME OF REFERENCE TO HOW YOU THINK.

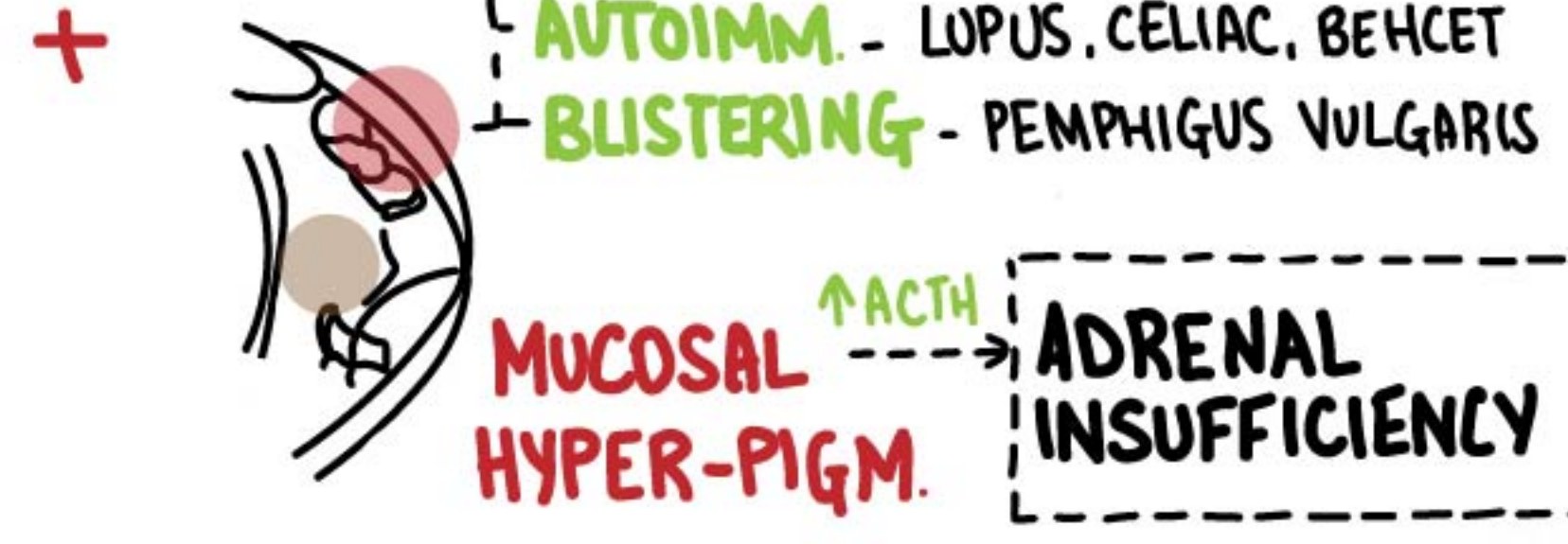
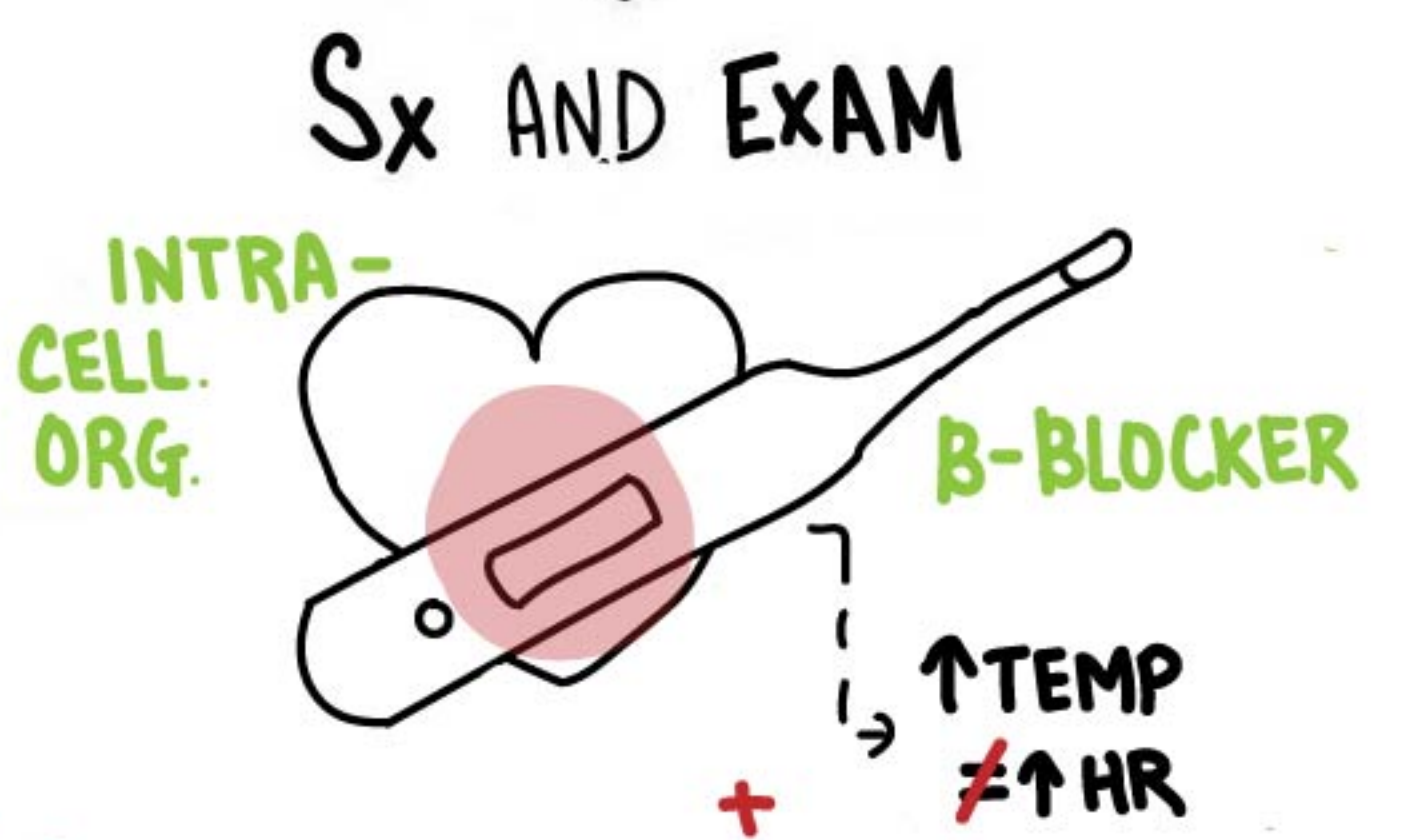
1 INVESTIGATE THE SYMPTOMS



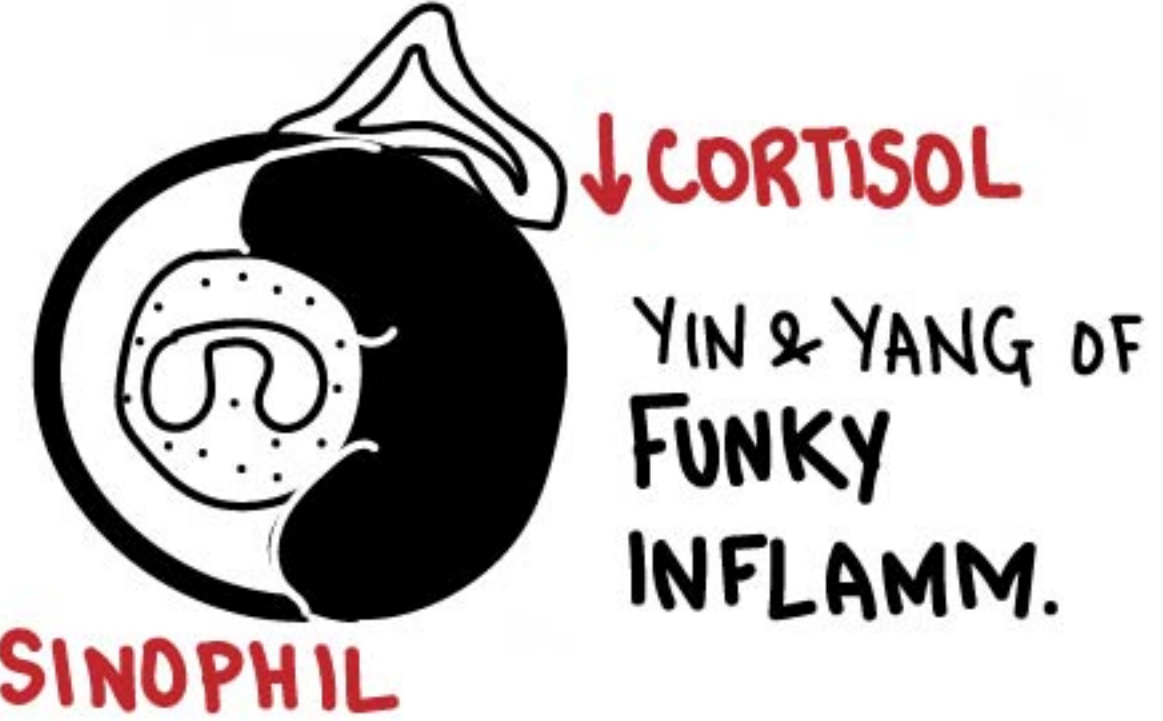
ORAL ULCERS + LAD



2. COLLECT CLUES

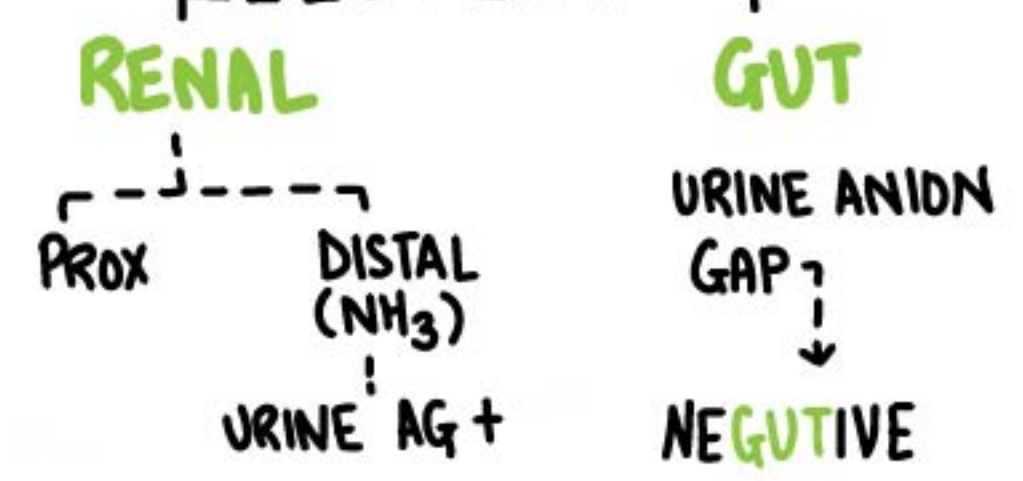


LABS AND IMAGING



EVALUATING ACID-BASE:

① PH = ACIDEMIC ② PCO₂ = 24 = MA
 ③ ANION GAP = 12 = NON AG MA



3. PUTTING IT TOGETHER

STEP 1: TIME + Sx + CONTEXT
 ACUTE CONFUSION + INSIDIOUS LAD + EOSINOPHILIA + HYPERKALEMIA + NON AG MA + HYPERPIGM. MUCOSA + FARMER

STEP 2: ? = ADRENAL INSUFF. + ORAL ULCERS + LUNG INFIL.

