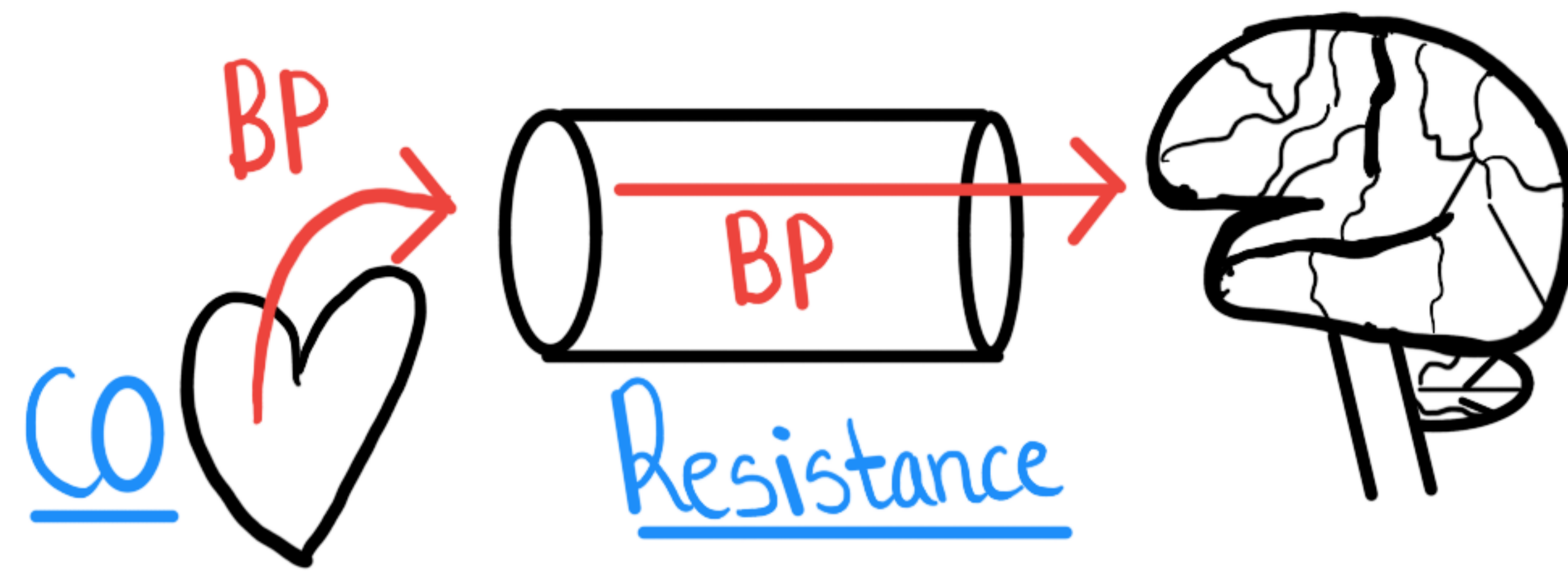


Syncope



↓ Cardiac Output

Syncope = Brief ↓ BP
↓ BP = ↓ CO or ↓ Resistance
↓
Syncope = ↓ CO or ↓ Resistance

↓ Resistance

Cardiogenic Obstruction

- Aortic Stenosis
- HOCM
- PE / Pulm HEN
- Pericardial Effusion

Hypovolemic Total Body

- ∅ Hemorrhage
 - GI loss
 - Renal loss
 - ↓ PO
- Hemorrhage

↓ Sympathetic Common

- Meds
- Parkinsons
- Diabetes

↑ Parasympathetic Vasovagal

- Micturition
- Swallowing
- Seeing Blood

Arrhythmia

- Brady
- Tachy

Shunting

- Subclavian Steal
- Post-Meal

Rare

- ↓ Adrenal
- Amyloidosis
- ↓ Thiamine
- Systemic Mastocytosis

Vagal Irritation

- Ictal Syncope
- Trigeminal Reflex
- Carotid ↑ Sensitivity
- Mediastinal Tumor

